

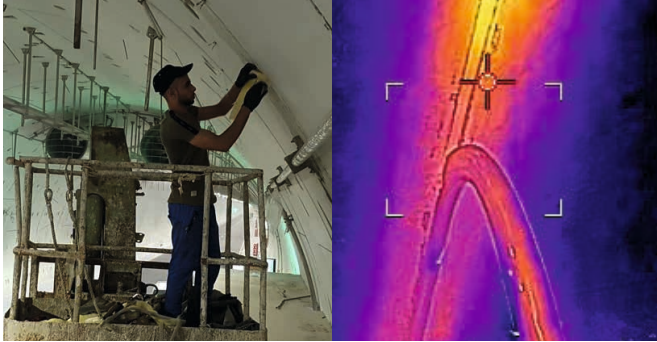


**KÖSTER**

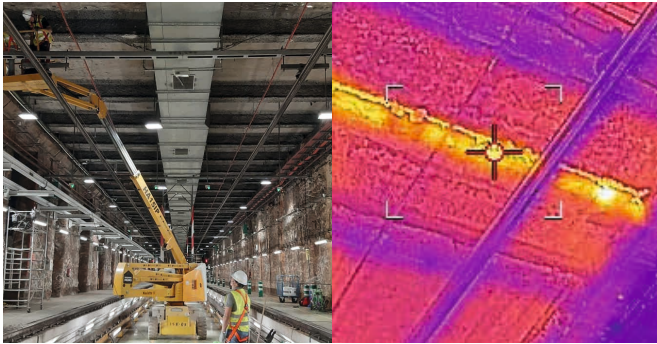
**KÖSTER**

## // Fields of Application

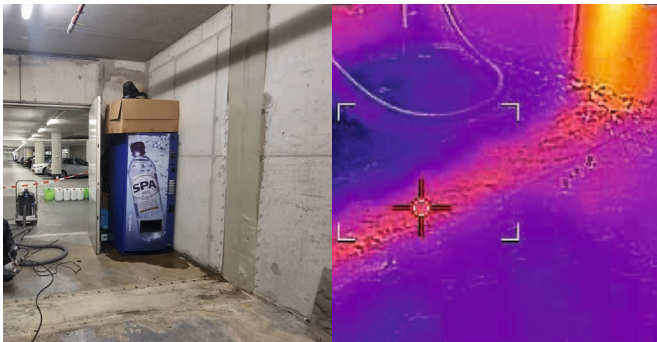
### Joint injection without drilling in tunnels



### Underground overhead joint e.g. in Metro tunnels



### Underground parking garage



## KÖSTER at your service – worldwide.



DEUTSCHE  
BAUCHEMIE



## // Contact us

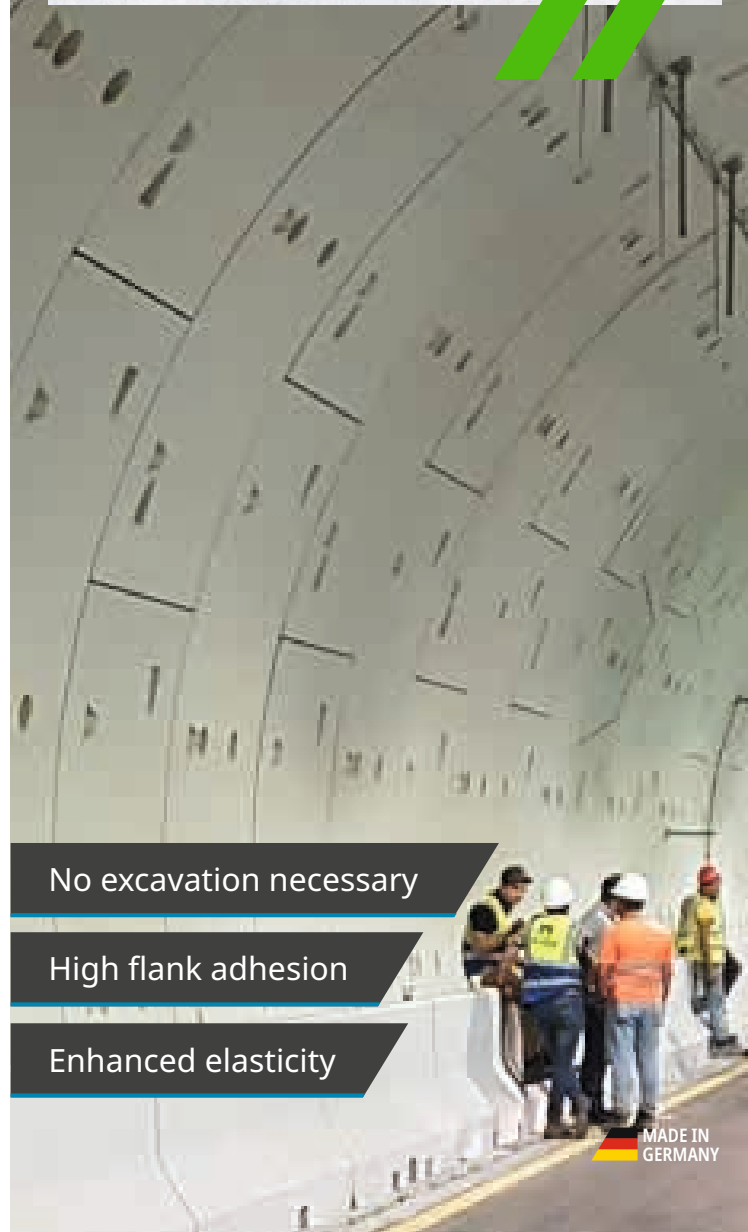
KÖSTER BAUCHEMIE AG  
Dieselstraße 1–10 · 26607 Aurich  
Tel.: +49 4941 9709 0  
E-Mail: [info@koster.eu](mailto:info@koster.eu)  
[www.koster.eu](http://www.koster.eu)

Follow us on social media:



Issued: 11/2024

**KÖSTER**  
Expansion joint injection  
for waterproofing leaking vertical  
and horizontal joints



No excavation necessary

High flank adhesion

Enhanced elasticity

MADE IN  
GERMANY

## // The system



### Key features at a glance

- Initial viscosity similar to water enables a deep penetration into the building structure
- Toxicologically and ecologically harmless proved with certificates
- Extremely elastic material to allow multidimensional movements of the structure
- Elegant and minimally invasive solution

## // Installation process

The KÖSTER Injection Gel S4 with the B+ component is a specially designed acrylic gel for the injection of joints, providing an outstanding elasticity, a higher adhesion to the flanks, and a reduced drying tendency when in contact with air currents.

Due to the exothermic reaction of the material, the injection progress can be followed by means of thermal imaging camera, showing the displacement of the material inside the joint. Finally, the surface of the joint is elastically closed, to protect the acrylic gel from moisture loses.

## // The products



### KÖSTER One day Superpacker 13 x 90 / 13 x 120 PH

The KÖSTER Packer is particularly suitable for pressure injections. The surface of the clamping rubber easily digs into the borehole, adapts to the borehole wall and thus increases its tightness. It has a firmly mounted pan-head fitting for pressure injection and is galvanized. (Multiple alternatives available.)



### KÖSTER Injection Gel S4

Reaction time adjustable acrylic gel for curtain injection and dilatation joint waterproofing. Due to the low viscosity it can be injected into very fine pored structures. Used with the B+ component to add higher flank adhesion to concrete surfaces by dilatation joint waterproofing. Yields after reaction time a viscoelastic product that is very suitable for moving joints.



### KÖSTER Acrylic Gel Pump

Pneumatic pump made of stainless steel for the application of KÖSTER Injection Gel G4, S4 and S4/B+. It provides a mixing ratio of 1:1, a capacity of max. 10 L per minute and a working pressure from 15 to 220 bar.